

How to insert a USB into Hyper-V 2012 R2 Virtual Machine

Windows Server 2012R2 has introduced the ability to insert a USB drive into a virtual machine! Finally!

New feature is called **Virtual Machine Enhanced Session Mode**. Beside USB support, this feature allows us to share following local resources:

- *Display configuration*
- *Audio*
- *Printers*
- *Clipboard*
- *Smart cards*
- *USB devices*
- *Drives*
- *Supported Plug and Play devices*

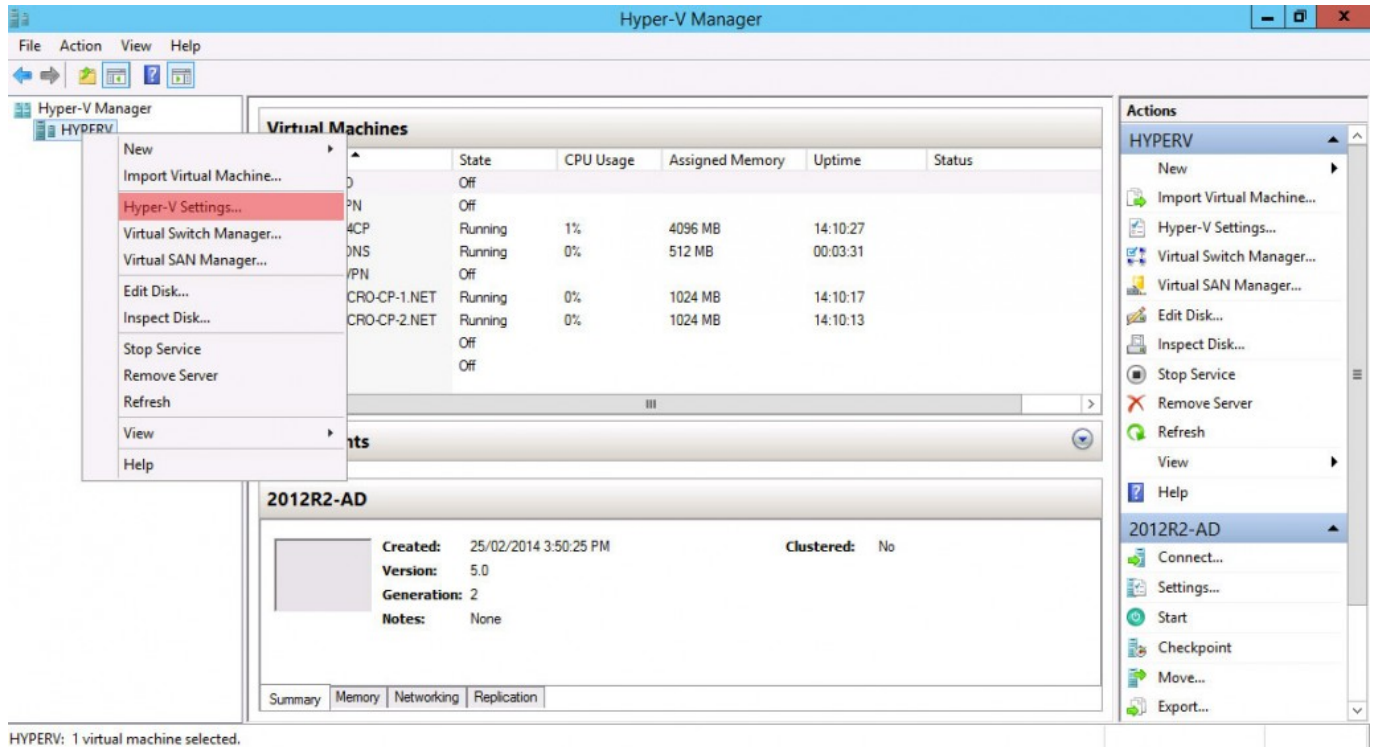
The enhanced session mode connection uses a Remote Desktop Connection session via the virtual machine bus (VMBus), so no network connection to the virtual machine is required.

Only the following guest operating systems support enhanced session mode connections:

- *Windows Server 2012 R2*
- *Windows 8.1*

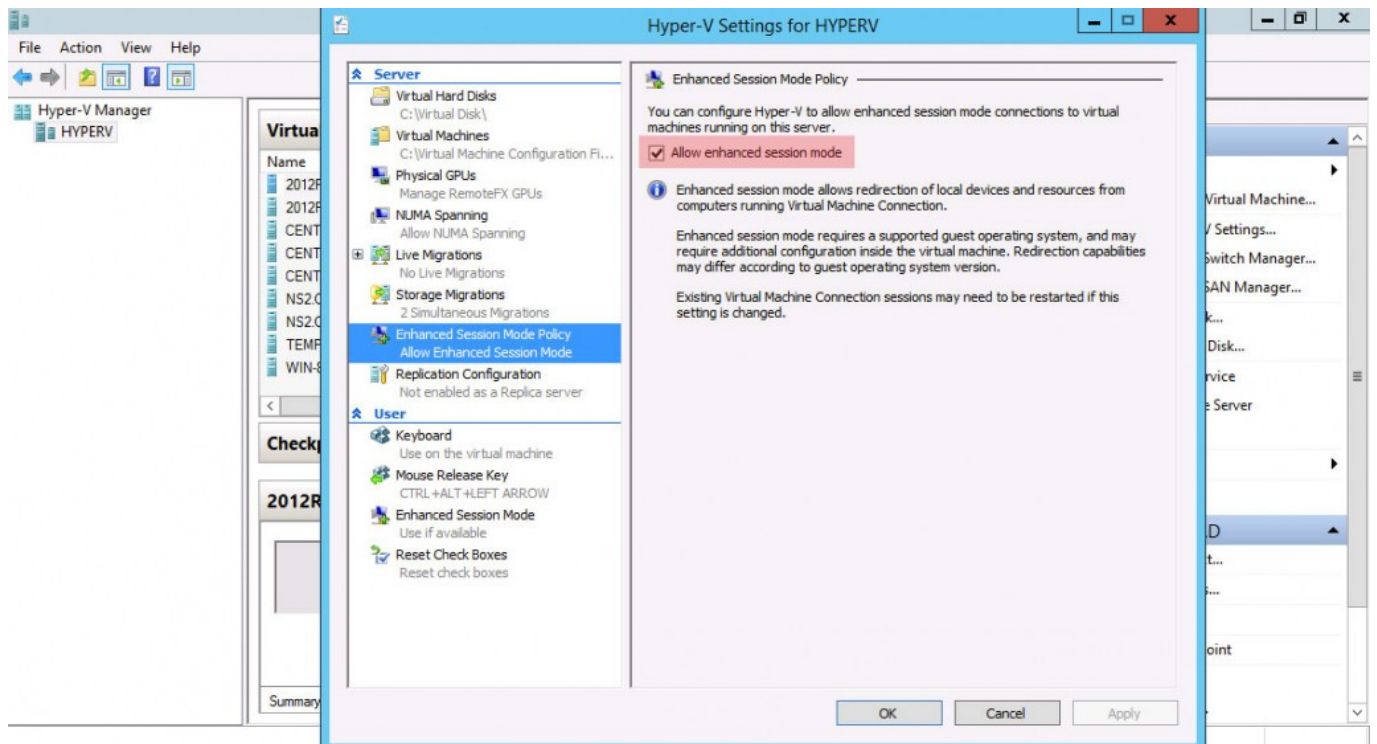
Here is how to enable it:

1. Right Click on the "SERVER NAME" and then Hyper-V Settings, in Hyper-V Manager

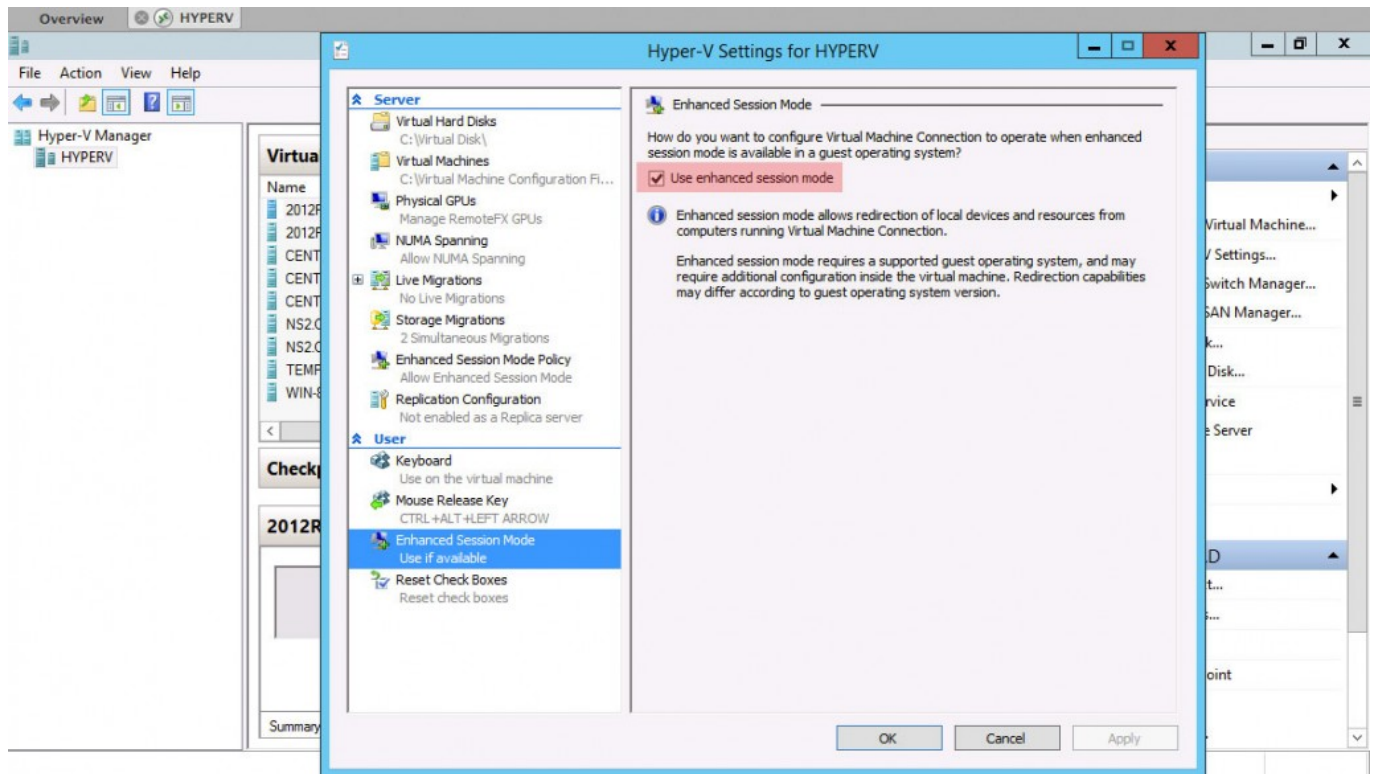


HYPERV: 1 virtual machine selected.

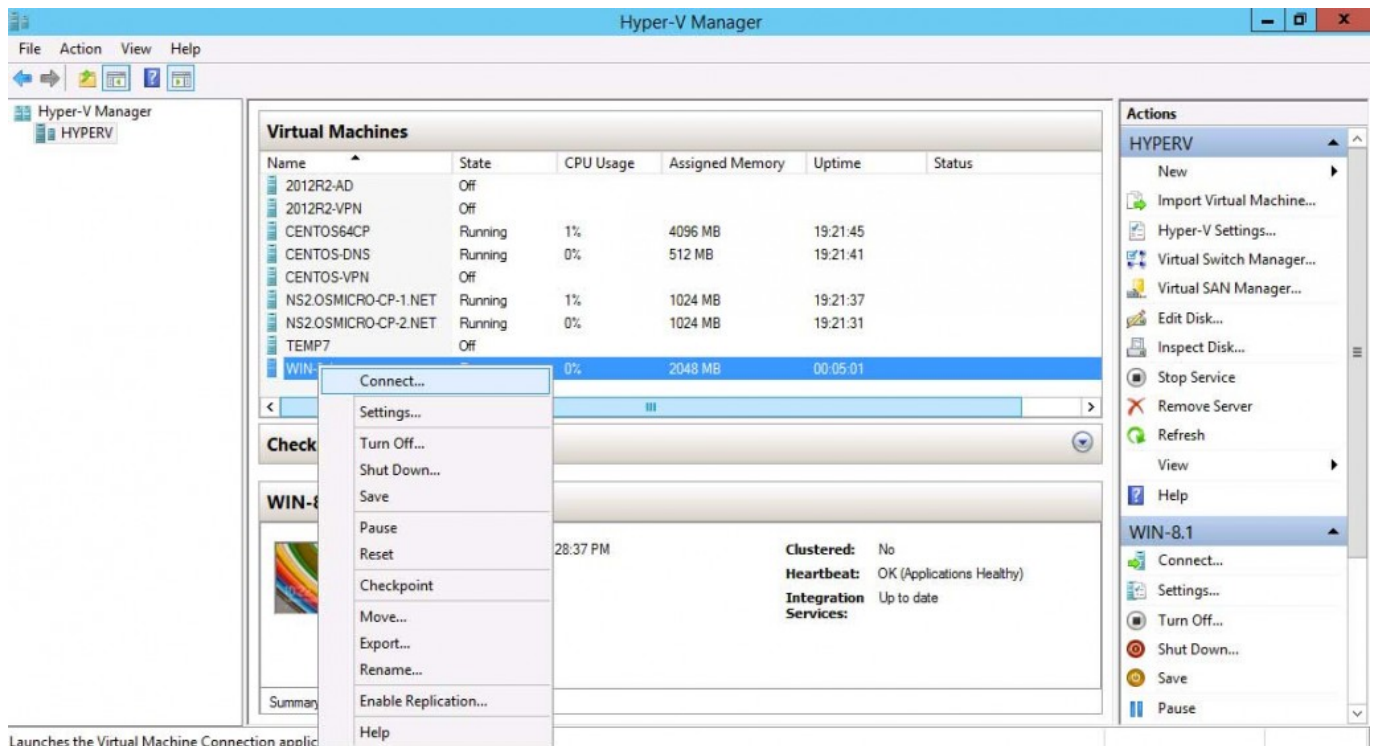
2. Under SERVER>Enhanced Session Mode Policy tick Allow enhanced session mode



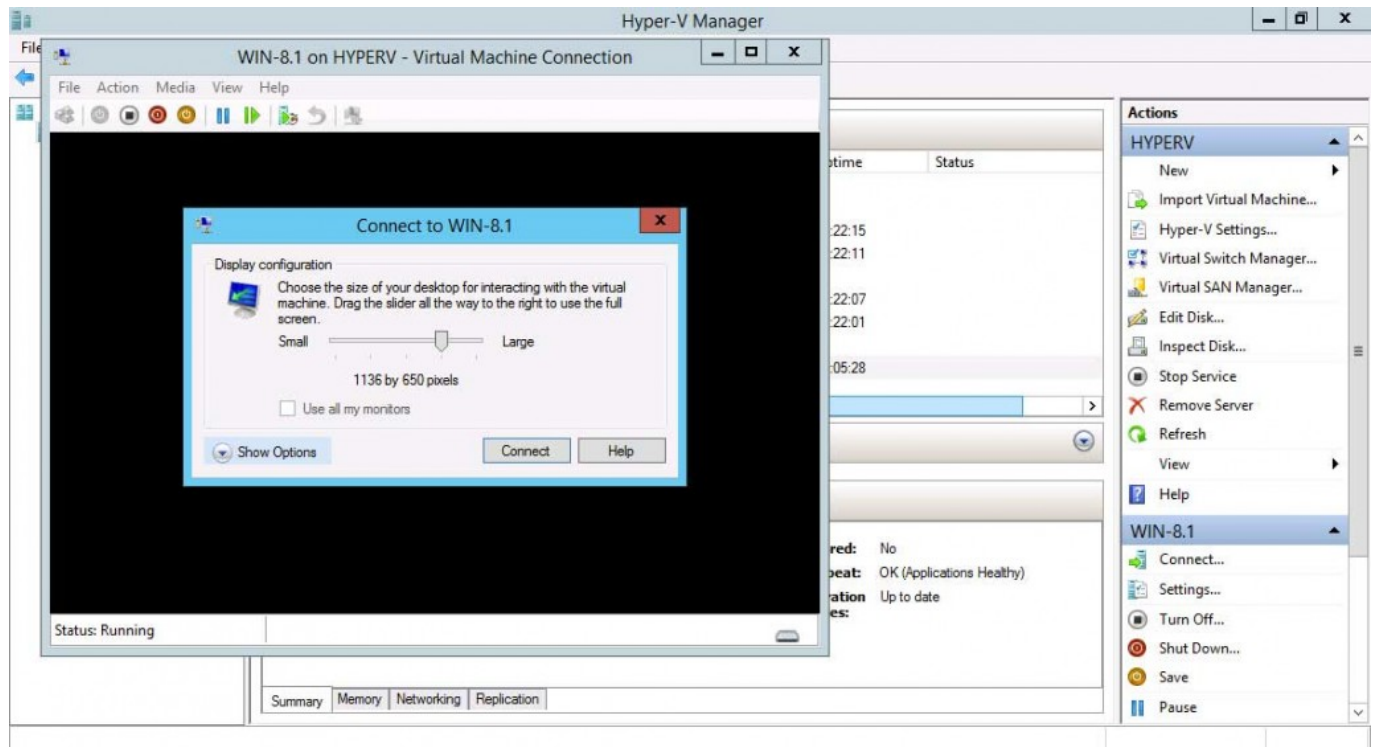
3. Under USER>Enhanced Session Mode and tick Use enhanced session mode



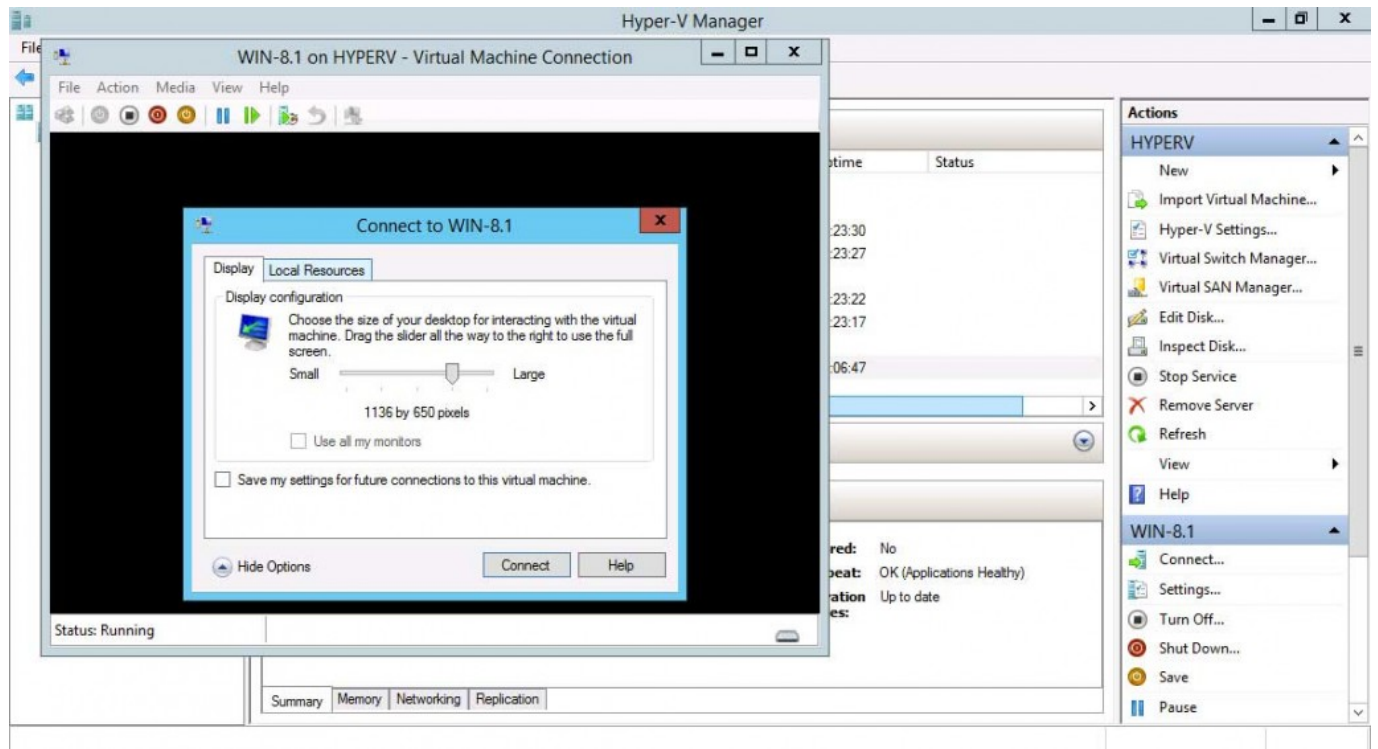
4. Right click on the VM and press Connect...



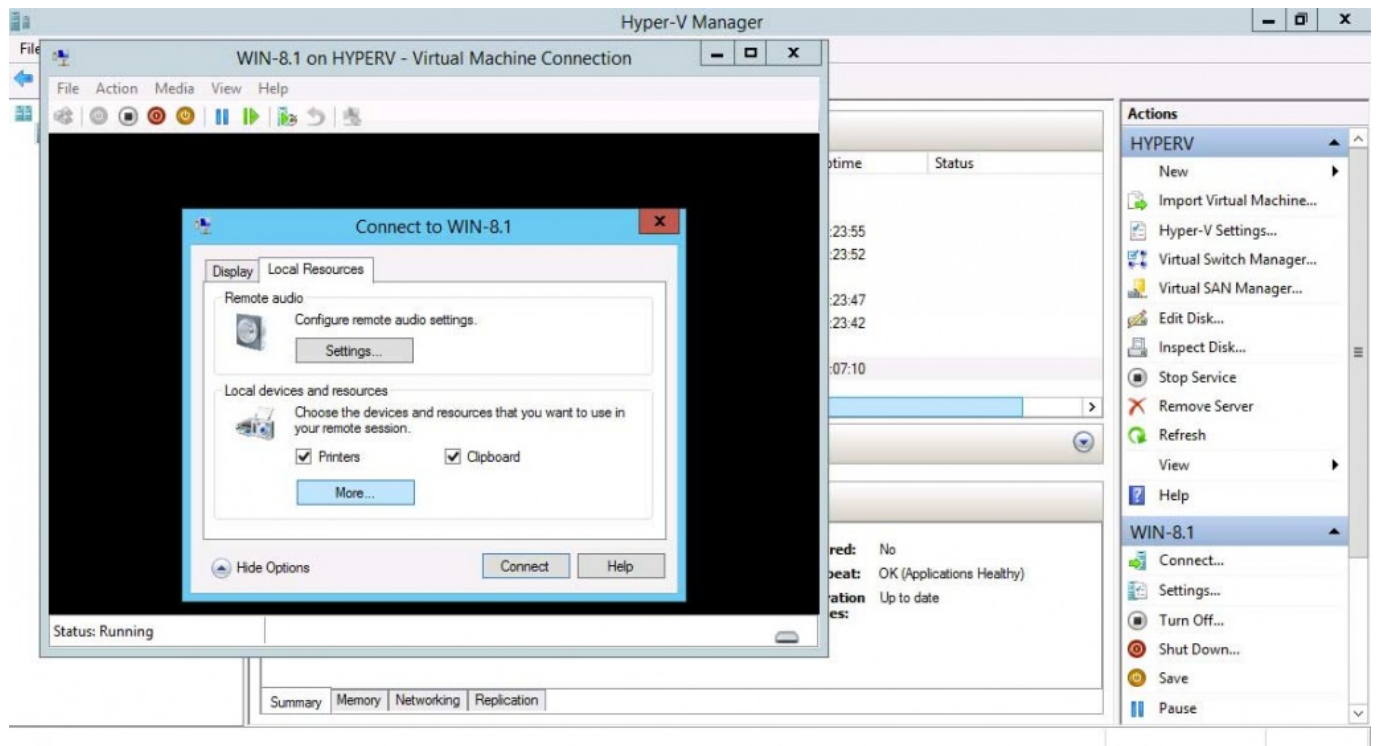
5. Click on *Show Options*



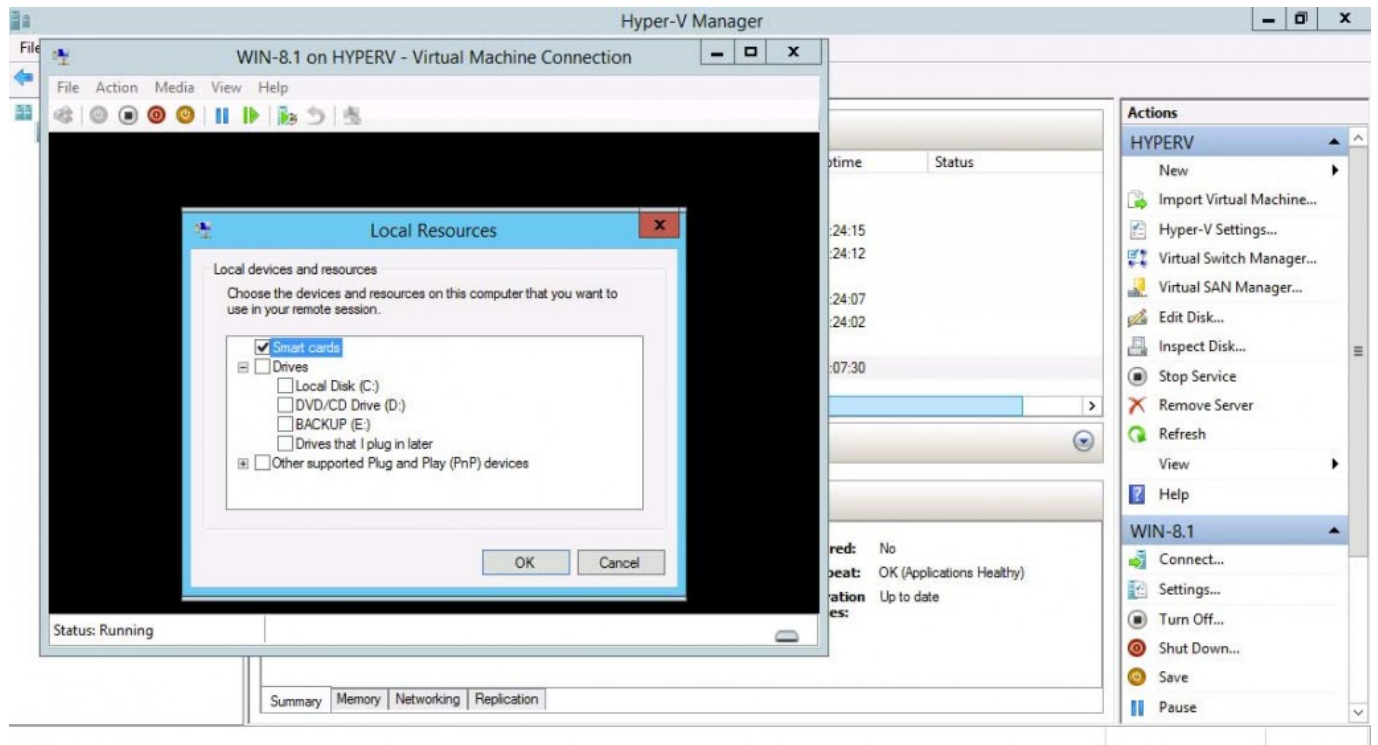
6. Select *Local Resources* tab



7. Click More...



8. Select the drive you wish to add to the VM and press Ok



9. Done