

# How to make Windows 7 Slow Network Faster

## 1) Disable Autotuning

Disabling autotuning will help much on DNS lookup and network discovery. It improves the data transfer speed also over the network.

Start command prompt as administrator, and follow the commands as shown in below example.

```
C:\Windows\system32> netsh interface tcp show global
Querying active state...

TCP Global Parameters
-----
Receive-Side Scaling State           : enabled
Chimney Offload State                : automatic
NetDMA State                         : enabled
Direct Cache Access (DCA)           : disabled
Receive Window Auto-Tuning Level    : normal
Add-On Congestion Control Provider  : none
ECN Capability                       : disabled
RFC 1323 Timestamps                 : disabled

C:\Windows\system32> netsh interface tcp set global autotuning=disabled
Ok.

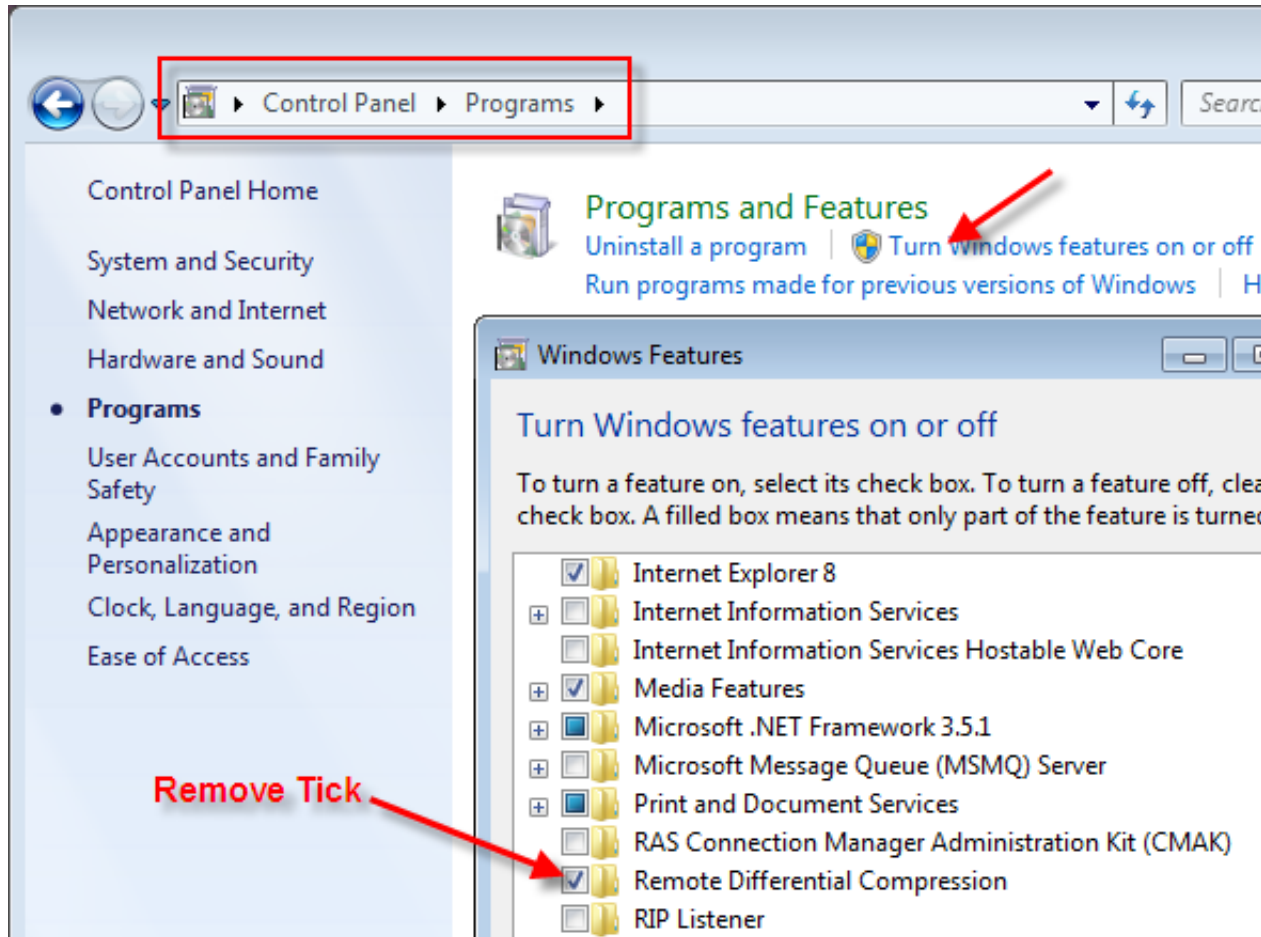
C:\Windows\system32> netsh interface tcp show global
Querying active state...

TCP Global Parameters
-----
Receive-Side Scaling State           : enabled
Chimney Offload State                : automatic
NetDMA State                         : enabled
Direct Cache Access (DCA)           : disabled
Receive Window Auto-Tuning Level    : disabled
Add-On Congestion Control Provider  : none
ECN Capability                       : disabled
RFC 1323 Timestamps                 : disabled
```

## 2) Remove RDC ( Remote Differential Compression)

This feature introduced with Windows Vista to transfer data over network in compressed format. The same RDC feature continued in Windows 7 also. Since most of the old operating systems came before vista do not support this RDC feature, it slows down network data transfer in Windows 7. You can remove this RDC (Remote Differential Compression) in Windows 7 by visiting control panel and programs and features. Click on 'Turn Windows features on or off',

as shown below.



### 3) Remove IPv6 from network properties.

If your internal or external networks do not require IPv6 protocol, better remove it under network connection properties. Keeping IPv6 in your computer sometimes slows down network by trying to register IPv6 addresses, or trying to get IPv6 address, or trying to resolve IPv6. Better remove it if it's not required.

### 4) Clear DNS Cache

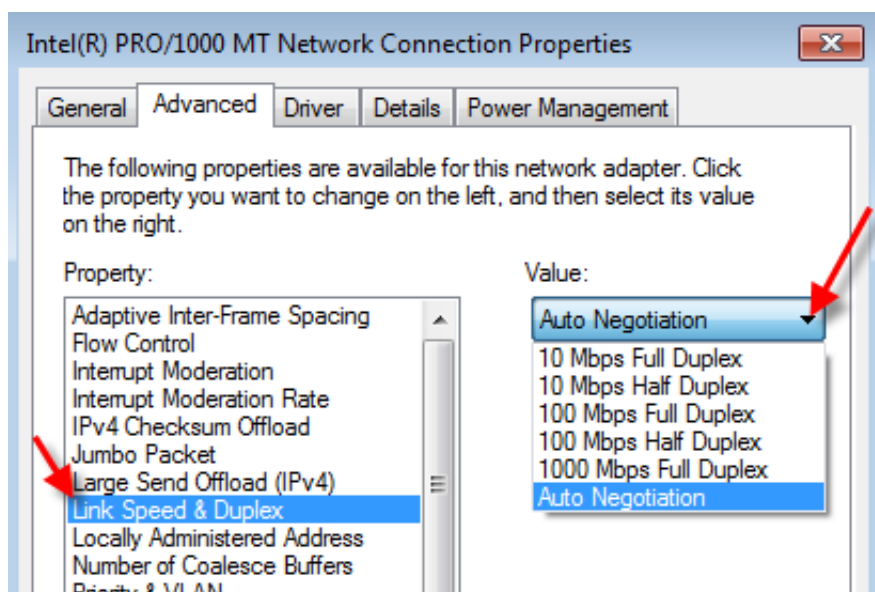
You can remove any DNS cache from computer, so next time DNS request will be solved by updated DNS server. This will avoid your computer to try broken or changed DNS records from cache. To clear DNS cache, open command prompt as administrator and type **ipconfig /flushdns**

## 5) Disable Wireless Network and any additional (including Virtual adapters) network adapters.

If you will not be using wireless network or it's your secondary network, I recommend you to disable wireless network in windows 7 under network connection. If it's enabled, windows 7 computer will be trying to connect available wireless network around you, and trying to login though its network. Loading your profiles and start up programs will be slow while booting because of this.

## 6) Modifying Link Speed & Duplex Value in Network adapter Properties.

This step also helps sometimes when you face problem with windows 7 network slow. I can't say which option will work better, because it depends on your physical network setup (network adapter, cable type, LAN speed and network switch). By default it is set for Auto Negotiation. But you can play around with Value options and find out which is working better for your computer and network.



I'm sure above steps will help to solve windows 7 network slow. Feel free to suggest any additional steps you did to solve windows 7 network slow, or problems you face to fix it.