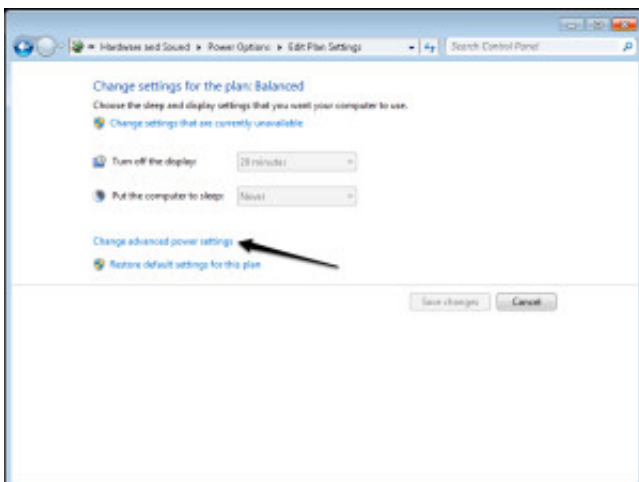
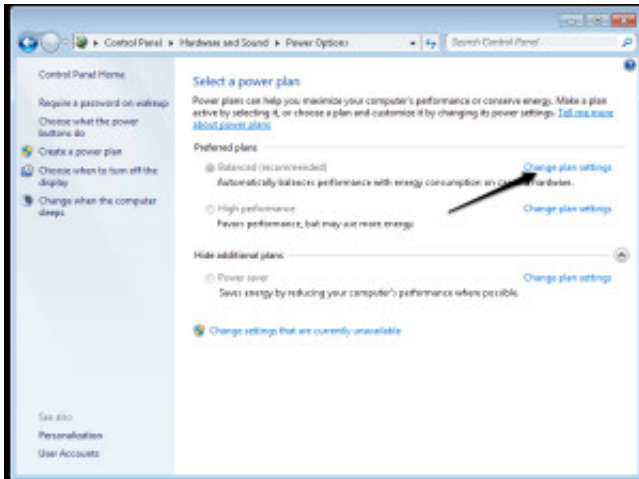
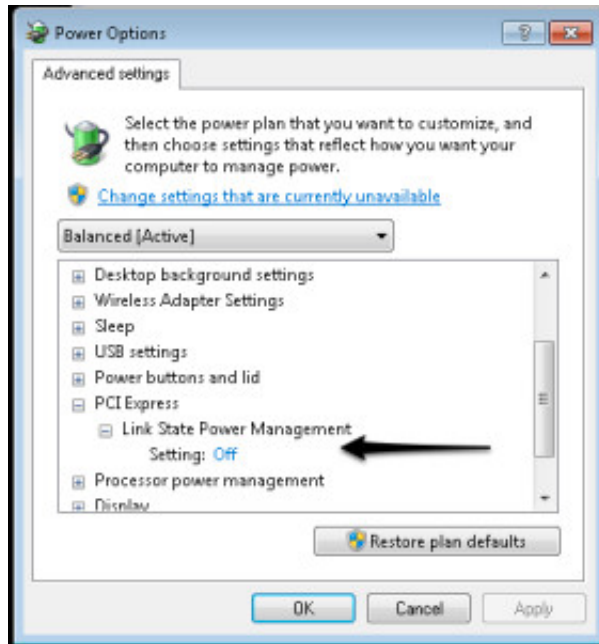


\Device\Ide\iaStor0 did not respond within the timeout period - Intel RAID

UPDATE 21.09.2013.

DO THIS FIRST.





ALSO, check this out:

<http://www.intel.com/support/chipsets/ismm/sb/CS-025783.htm>

ONLY DO THIS IF THE TOP DOESNT WORK.

1. First, check if your hard drive(s) support "Link Power Management (LPM)". This error usually appears on drives that do not support LPM, "feature described by the Serial ATA specification to overcome the power demand of a high-speed serial interface, SATA and providing the capability of SATA at the minimum power cost."

**2. If your drives do not support LPM we can disable it, since default is enabled. To disable LPM selectively by port go to,
HKEY_LOCAL_MACHINE\System\CurrentControlSet\Services\iaStor\Parameters\Portn**

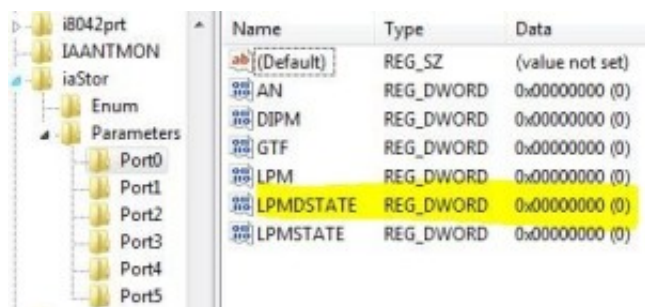
where *n* represents the port number, starting from *0*. Within each of those keys are the following DWORD values:

LPM: 0 (disable) or 1 (enable); default = enable

LPMSTATE: 0 (partial), 1(slumber); default = disable; ignored when LPM = 0

LPMSTATE: 0 (partial), 1 (slumber); default = enable

DIPM: 0 (disable), 1 (enable); default = enable



Name	Type	Data
(Default)	REG_SZ	(value not set)
AN	REG_DWORD	0x00000000 (0)
DIPM	REG_DWORD	0x00000000 (0)
GTF	REG_DWORD	0x00000000 (0)
LPM	REG_DWORD	0x00000000 (0)
LPMSTATE	REG_DWORD	0x00000000 (0)
LPMSTATE	REG_DWORD	0x00000000 (0)

Change the states on all SATA ports, restart the computer.

Hopefully this helps.